


AQ PRO NEW!



Handheld Indoor Air Quality Monitor

The Latest in Indoor Air Quality Monitoring & Real-Time Data-Logging for IAQ Analysis in Hospitals, Universities, Labs, Airports, and more

- Customize UP to 3 Gases (Multiple Parameters - Up to 6 Total)
- REAL-TIME Continuous Data-Logging
- Active Internal Sampling Pump
- Compact Handheld Unit
- PC Software & USB Included
- Large Internal Memory (2000)
- Long Lasting Rechargeable Battery
- Barometric Air Pressure
- Protective Magnetic Rubber Boot
- Optional Wireless Printer
- Optional Handheld Probe
- MADE IN USA 



% RH

Temp

Barometric Pressure

CO₂

CO

Formaldehyde

NO₂

SO₂

H₂S

O₂

NO



“Built with Quality in Mind”



Real-Time Data-Logging for Graphs, Data Review, IAQ reports

Wireless Communications with Computer & Remote Printer

Light Weight, Durable, Handheld Design

E Instruments International

www.E-Inst.com

P: 215-750-1212 F: 215-750-1399 A: 402 Middletown Blvd, Ste 216 Langhorne, PA 19047

AQ PRO



Specifications

Parameter	Sensor	Range	Res.	Accuracy
Relative Humidity	TFC	5 - 95% RH	0.1% RH	±2% RH
Ambient Temp.	Pt100	-40 - 257°F (-40 - 125°C)	0.1°C/F	±0.4°C (0 - 60°C)
Barometric Pressure	Solid State	260 - 1260 mbar	1 mbar	±2 mbar
Differential Pressure	Bridge	± 8.0 inH ₂ O (±20.0 mbar)	0.1 inH ₂ O (0.25 mbar)	±1% of rdg.
Temperature Type K T1	Tc K	0 - 2000°F (0 - 1100°C)	1°C/F	±2% of rdg
Air Velocity	Calculated	0 - 300 ft/sec	1 ft/sec	
Electromagnetic Compatibility		EN 61326-1, Portable Equipment		



AQ PRO ORDERING CODE

Part #: PRO - ___ - ___ - ___

Example: Part #: PRO - C2 - C - H = CO₂, CO, & H₂S

ALL AQ PRO Kits Include:

- Temperature, % Relative Humidity
- Barometric Pressure
- PC Software & USB Cable
- REAL-TIME Continuous Data-Logging
- Bluetooth Connectivity
- Protective Carrying Case
- Continuous Active Internal Sampling Pump
- Differential Pressure
- Operating Manual & Quick Reference Guide
- Long Lasting Battery & AC Charger
- Factory Calibration Certificate

Select UP to ANY 3* Gases Below:

Parameter	Sensor	Range	Res.	Accuracy
C2 - Carbon Dioxide (CO ₂) ¹	NDIR	0 - 5,000 ppm	1 ppm	±2% of rdg. ± 10 ppm
C - Carbon Monoxide (CO) ¹	EC ^{2,5}	0 - 200 ppm	0.1 ppm	±4% of rdg. ± 0.5 ppm
F - Formaldehyde (CH ₂ O) ^{3,4}	EC ^{2,5}	0 - 10 ppm (0 - 10,000 ppb)	1 ppb	±5% of rdg. ± 50 ppb
H - Hydrogen Sulfide (H ₂ S) ¹	EC ^{2,5}	0 - 100 ppm	1 ppm	±4% of rdg. ± 0.5 ppm
N - Nitrogen Dioxide (NO ₂) ¹	EC ^{2,5}	0 - 20 ppm	0.1 ppm	±4% of rdg. ± 0.5 ppm
O - Oxygen (O ₂)	EC ^{2,5}	0 - 25%	0.1 %	±0.1% vol rdg.
S - Sulfur Dioxide (SO ₂) ¹	EC ^{2,5}	0 - 20 ppm	0.1 ppm	±4% of rdg. ± 0.5 ppm
X - Nitric Oxide (NO) ¹	EC ^{2,5}	0 - 250 ppm	0.1 ppm	±4% of rdg. ± 0.5 ppm

1. Other Ranges are Available Upon Request 2. Electrochemical 3. Accuracy Based on Laboratory Conditions
4. This sensor may have interference from H₂, CO, H₂S and other reducing gases such as alcohols
***5. Maximum of TWO (2) Electrochemical (EC) Sensors Per Unit**

Optional Accessories



Wireless Bluetooth™
Printer
(EE900P)



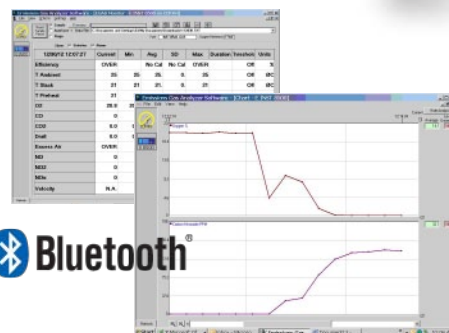
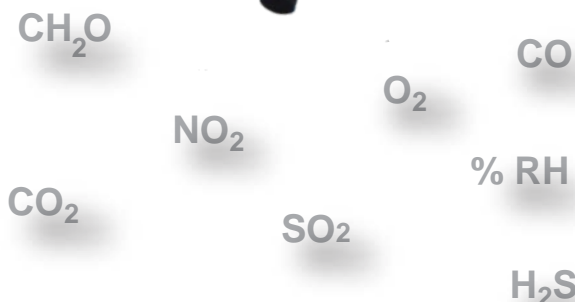
Sampling Probe
(E85AACSF13)



Moisture Exchange
Tube for Calibration
(AQMET)



Pitot Tube
for Air Velocity
(BB610032)



AQ Gas® Real-Time
Datalogging Software

Distributed By:



E Instruments International

www.E-Inst.com

P: 215-750-1212 F: 215-750-1399 A: 402 Middletown Blvd, Ste 216 Langhorne, PA 19047