

# AQ VOC NEW!



## Portable Handheld VOC Monitor

Accurate VOC Monitoring & Real-Time Data-Logging for Air Quality Analysis in Industrial Safety, Environmental, Laboratories and other IAQ Applications

### Dynamic PID VOC Sensor Technology

- 0 - 20,000 PPB
- 0 - 200 PPM

VOC in ppb/ $\mu\text{g}/\text{m}^3$  or ppm/ $\text{mg}/\text{m}^3$

### UPGRADEABLE:

(Add UP TO 2 More Gas Sensors)

REAL-TIME Continuous Data-Logging

Active Internal Sampling Pump

Large Internal Memory (2000)

PC Software & USB Included

Long Lasting Rechargeable Battery

Barometric Air Pressure

Protective Magnetic Rubber Boot

Optional Wireless Printer

Optional Handheld Probe

MADE IN USA 



VOC

% RH

Temp

Barometric Pressure

Formaldehyde

CO<sub>2</sub>

O<sub>2</sub>

CO

NO<sub>2</sub>

H<sub>2</sub>S

SO<sub>2</sub>

NO

“Built with Quality in Mind”

Real-time Data-Logging Software for Graphs, Data Review, IAQ reports

Wireless Communications with Computer & Remote Printer

Light Weight, Durable, Handheld Design



E Instruments International

[www.E-Inst.com](http://www.E-Inst.com)

P: 215-750-1212 F: 215-750-1399 A: 402 Middletown Blvd, Ste 216 Langhorne, PA 19047

# AQ VOC



## Specifications

Parameter	Sensor	Range	Res.	Accuracy
<b>Low Range VOC</b>	PID	0 - 20,000 ppb (0 - 46,000 µg/m <sup>3</sup> )	1 ppb (1 µg/m <sup>3</sup> )	±10% of rdg. ± 20 ppb
<b>OR</b>				
<b>High Range VOC</b>	PID	0 - 200 ppm (0 - 460 mg/m <sup>3</sup> )	1 ppm (1 mg/m <sup>3</sup> )	±10% of rdg. ± 2 ppm
<b>Relative Humidity</b>	TFC	5 - 95% RH	0.1% RH	±2% RH
<b>Ambient Temp.</b>	Pt100	-40 - 257°F (-40 - 125°C)	0.1°C/F	±0.4°C (0 - 60°C)
<b>Barometric Pressure</b>	Solid State	260 - 1260 mbar	1 mbar	±2 mbar
<b>Differential Pressure</b>	Bridge	±8.0 in H <sub>2</sub> O (±20 mbar)	0.1 inH <sub>2</sub> O (0.25 mbar)	±1% of rdg.
<b>Air Velocity</b>	Calculated	0 - 300 ft/sec	1 ft/sec	
<b>Electromagnetic Compatibility</b>		EN 61326-1, Portable Equipment		



VOC

## AQ VOC ORDERING CODE

Part #: VOC- \_\_\_ - \_\_\_ - \_\_\_

Example: Part #: VOC - 1 - F - C2 = Low Range VOC, CH<sub>2</sub>O, CO<sub>2</sub>

### ALL AQ VOC Kits Include:

- Temperature, % Relative Humidity
- Barometric Pressure
- PC Software & USB Cable
- REAL-TIME** Continuous Data-Logging
- Bluetooth Connectivity
- Protective Carrying Case
- Continuous Active Internal Sampling Pump
- Operating Manual & Quick Reference Guide
- Long Lasting Battery & AC Charger
- Factory Calibration Certificate

### Select Your VOC Range:

Parameter	Sensor	Range
<b>V1 - Low Range VOC</b>	PID	0 - 20,000 ppb (0 - 46,000 µg/m <sup>3</sup> )
<b>V2 - High Range VOC</b>	PID	0 - 200 ppm (0 - 460 mg/m <sup>3</sup> )

### Optional Gas Sensor Upgrades (Choose UP To ANY 2)

<b>C2 - Carbon Dioxide (CO<sub>2</sub>)<sup>1</sup></b>	NDIR	0 - 5,000 ppm	1 ppm	±2% of rdg. ± 10 ppm
<b>C - Carbon Monoxide (CO)<sup>1</sup></b>	EC <sup>2</sup>	0 - 200 ppm	0.1 ppm	±4% of rdg. ± 0.5 ppm
<b>F - Formaldehyde (CH<sub>2</sub>O)<sup>3,4</sup></b>	EC <sup>2</sup>	0 - 10,000 ppb	1 ppb	±5% of rdg. ± 50 ppb
<b>H - Hydrogen Sulfide (H<sub>2</sub>S)<sup>1</sup></b>	EC <sub>2</sub>	0 - 100 ppm	1 ppm	±4% of rdg. ± 0.5 ppm
<b>N - Nitrogen Dioxide (NO<sub>2</sub>)<sup>1</sup></b>	EC <sup>2</sup>	0 - 20 ppm	0.1 ppm	±4% of rdg. ± 0.5 ppm
<b>O - Oxygen (O<sub>2</sub>)</b>	EC <sup>2</sup>	0 - 25%	0.1%	±0.1% vol rdg.
<b>S - Sulfur Dioxide (SO<sub>2</sub>)<sup>1</sup></b>	EC <sup>2</sup>	0 - 20 ppm	0.1 ppm	±4% of rdg. ± 0.5 ppm
<b>X - Nitric Oxide (NO)<sup>1, 2</sup></b>	EC <sup>2</sup>	0 - 250 ppm	0.1 ppm	±4% of rdg. ± 0.5 ppm

1. Other Ranges are Available Upon Request      2. Electrochemical      3. Accuracy Based on Laboratory Conditions  
4. This sensor may have interference from H<sub>2</sub>, CO, H<sub>2</sub>S and other reducing gases such as alcohols

## Optional Accessories



Wireless Bluetooth™  
Printer  
(EE900P)



Sampling Probe  
(E85AACSF13)



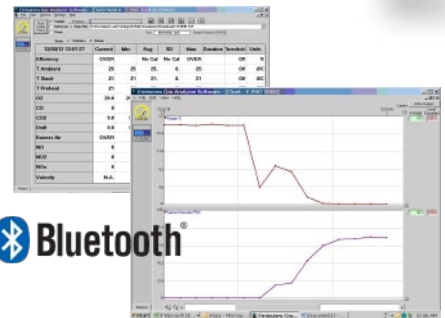
Moisture Exchange  
Tube for Calibration  
(AQMET)



Zero Filter for  
Calibration  
(AQ CAL-ZF)

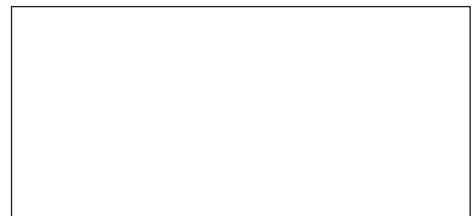


Pitot Tube  
for Air Velocity  
(BB610032)



AQ Gas<sup>®</sup> Real-Time  
Datalogging Software

### Distributed By:



E Instruments International

www.E-Inst.com

P: 215-750-1212 F: 215-750-1399 A: 402 Middletown Blvd, Ste 216 Langhorne, PA 19047